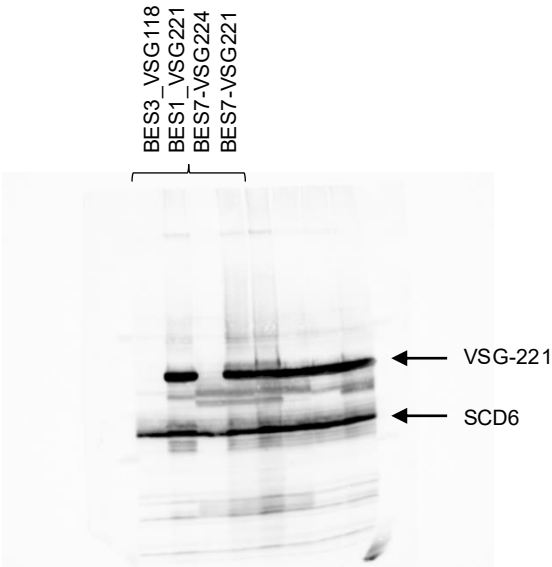
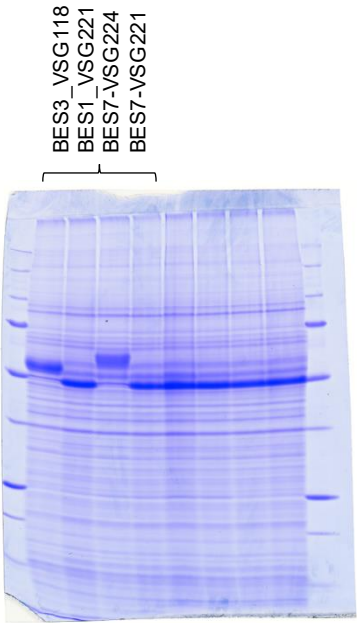
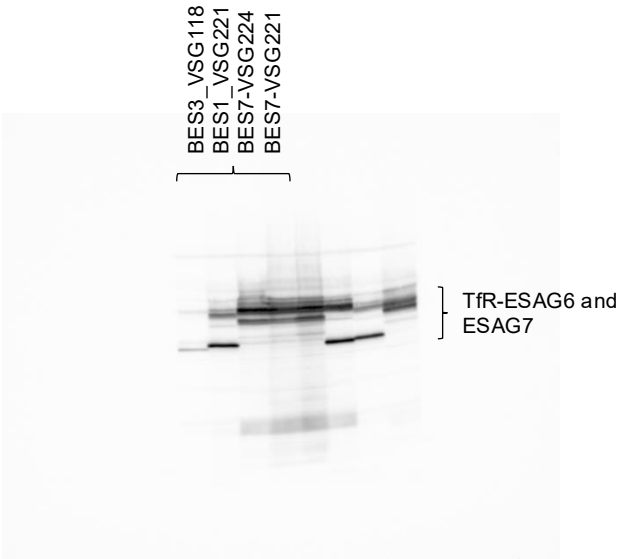
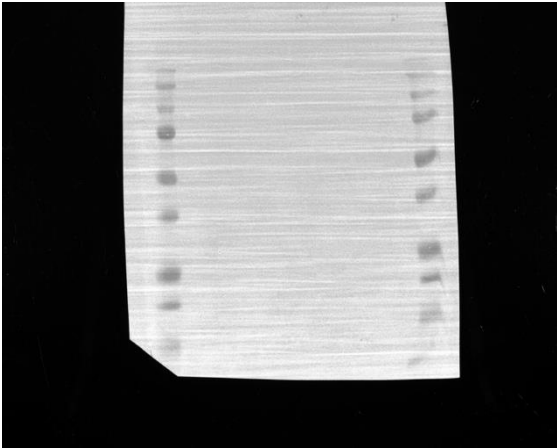


Colorimetric western blot protein standards will overlay precisely with the anti-TfR blot



**Figure 1, Source data 2.** Original Coomassie Blue stained gel and membranes corresponding to Figure 1, panel B. Only the first four lanes are used in this figure. Markers are Precision Plus Protein Markers (BioRad): unstained for the Coomassie Blue gel and pre-stained all blue for the membranes. The same membrane was probed sequentially with anti-TfR antibodies then anti-SCD6 and anti-VSG221 antibodies.